

PART OF THE SE.1/4, OF SECTION 11, T.6N., R.2W., S.L.B. & M.

535

MARK AND KENNA SUBDIVISION

IN WEBER COUNTY

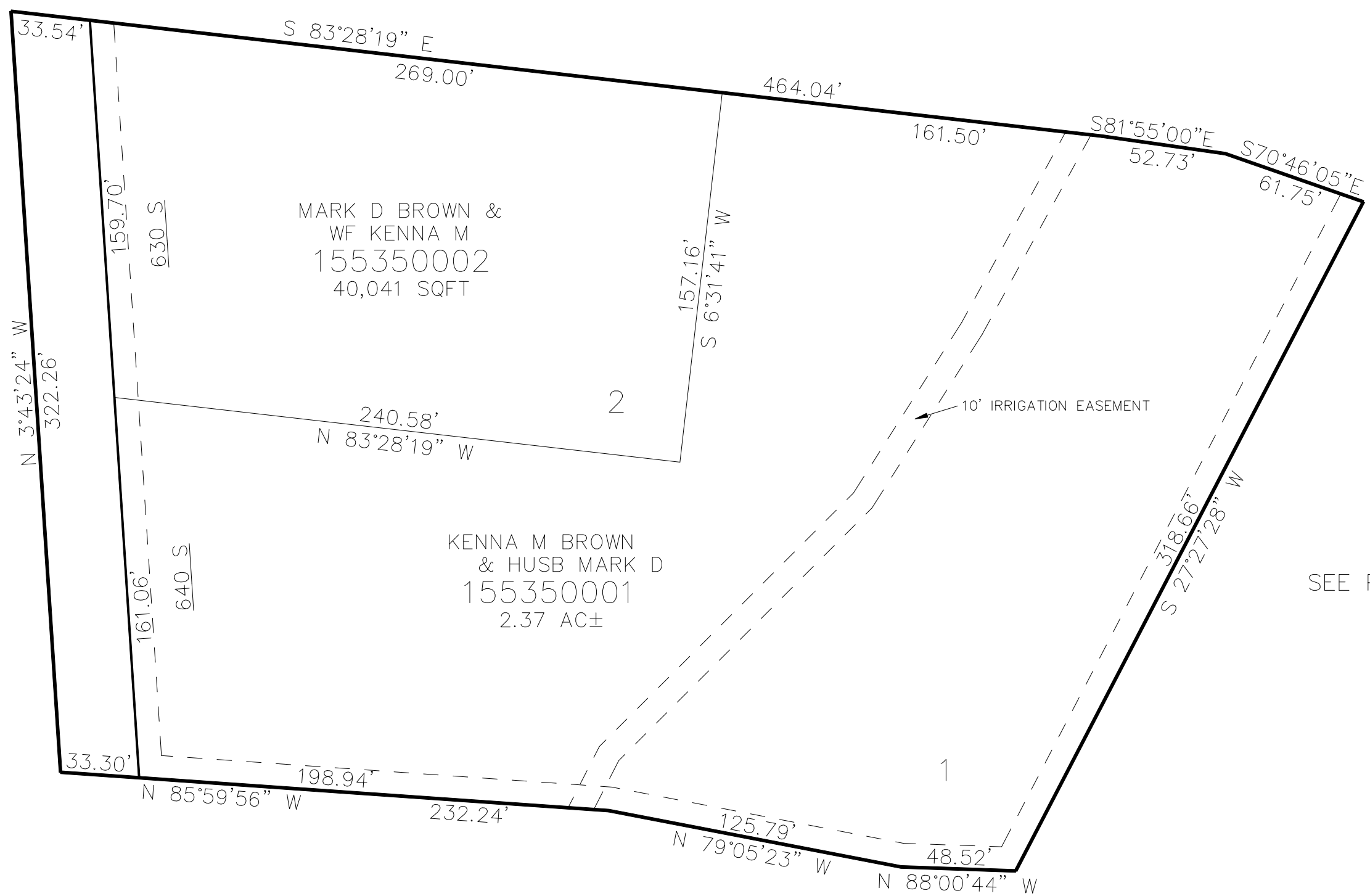
TAXING UNIT: 516

SCALE 1" = 50'

SEE PAGE 45

SEE PAGE 45

3600 WEST STREET



10' UTILITY & DRAINAGE EASEMENTS EACH
SIDE OF PROPERTY LINES AS INDICATED
BY DASHED LINES EXCEPT AS OTHERWISE
SHOWN.

FOR COMPLETE ENG DATA SEE
ORIGINAL DEDICATION PLAT IN
BOOK 73, PAGE 86 OF RECORDS.